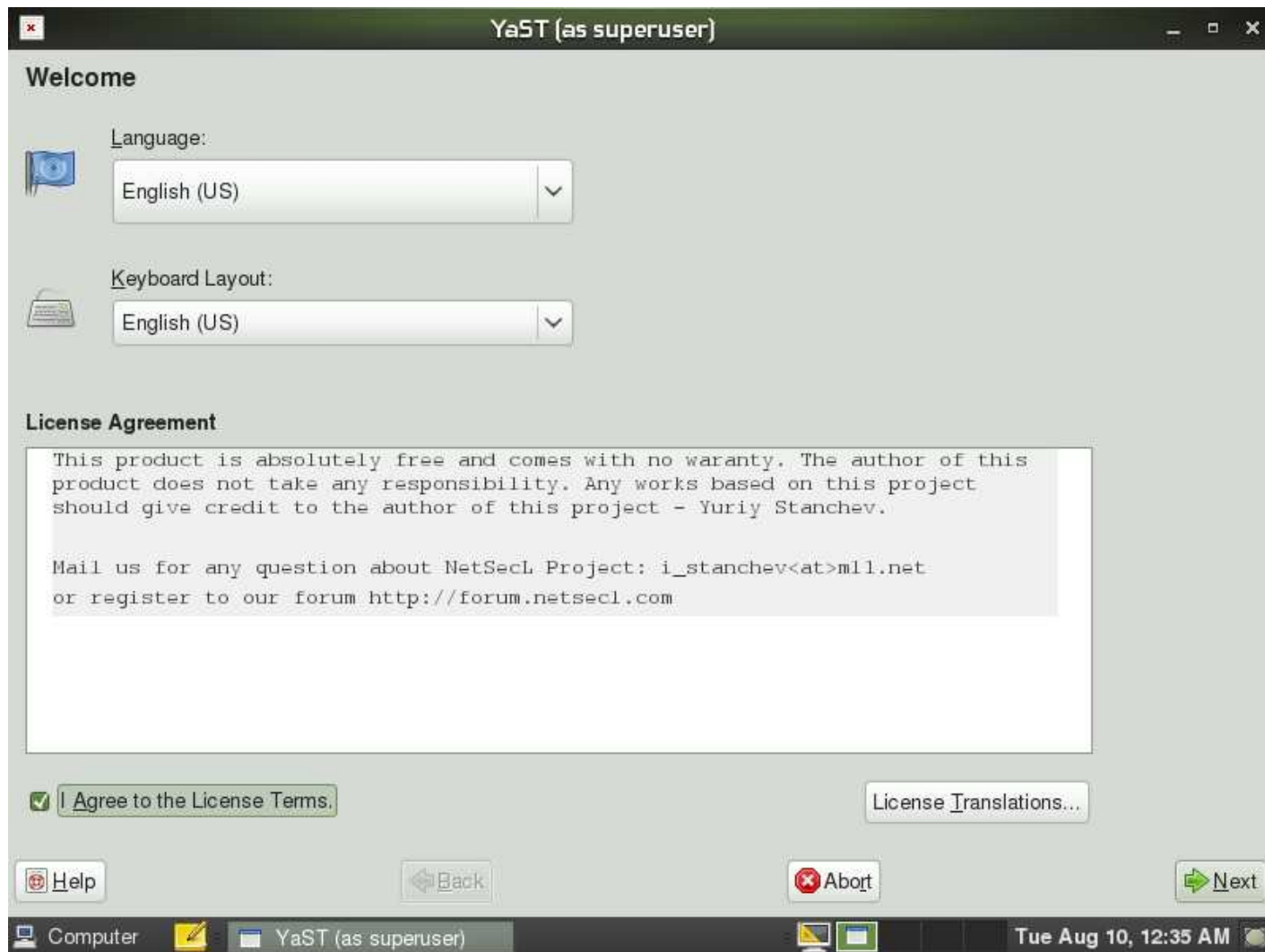
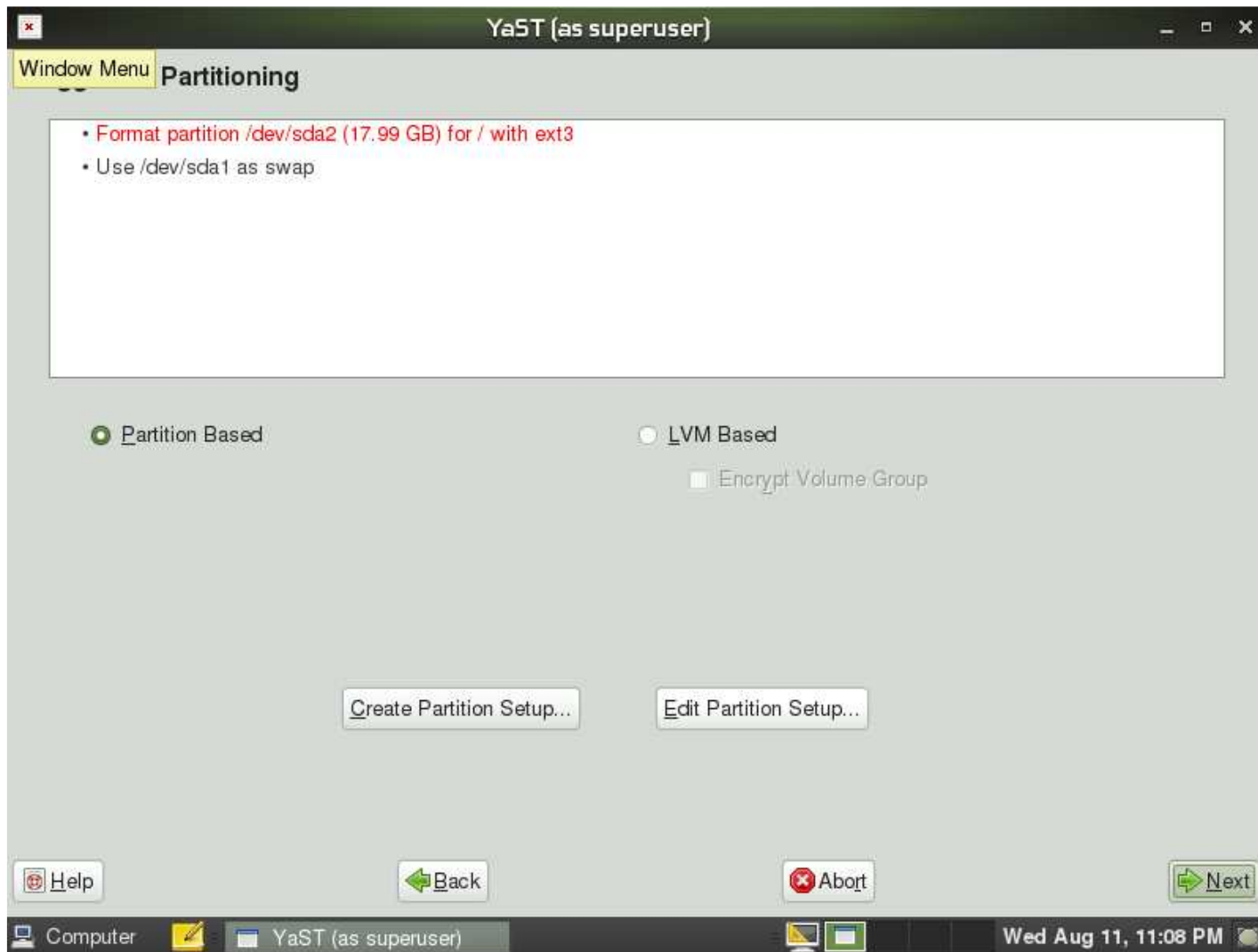


Installation of NetSecL 3.0 Live onto HDD/USB/VM

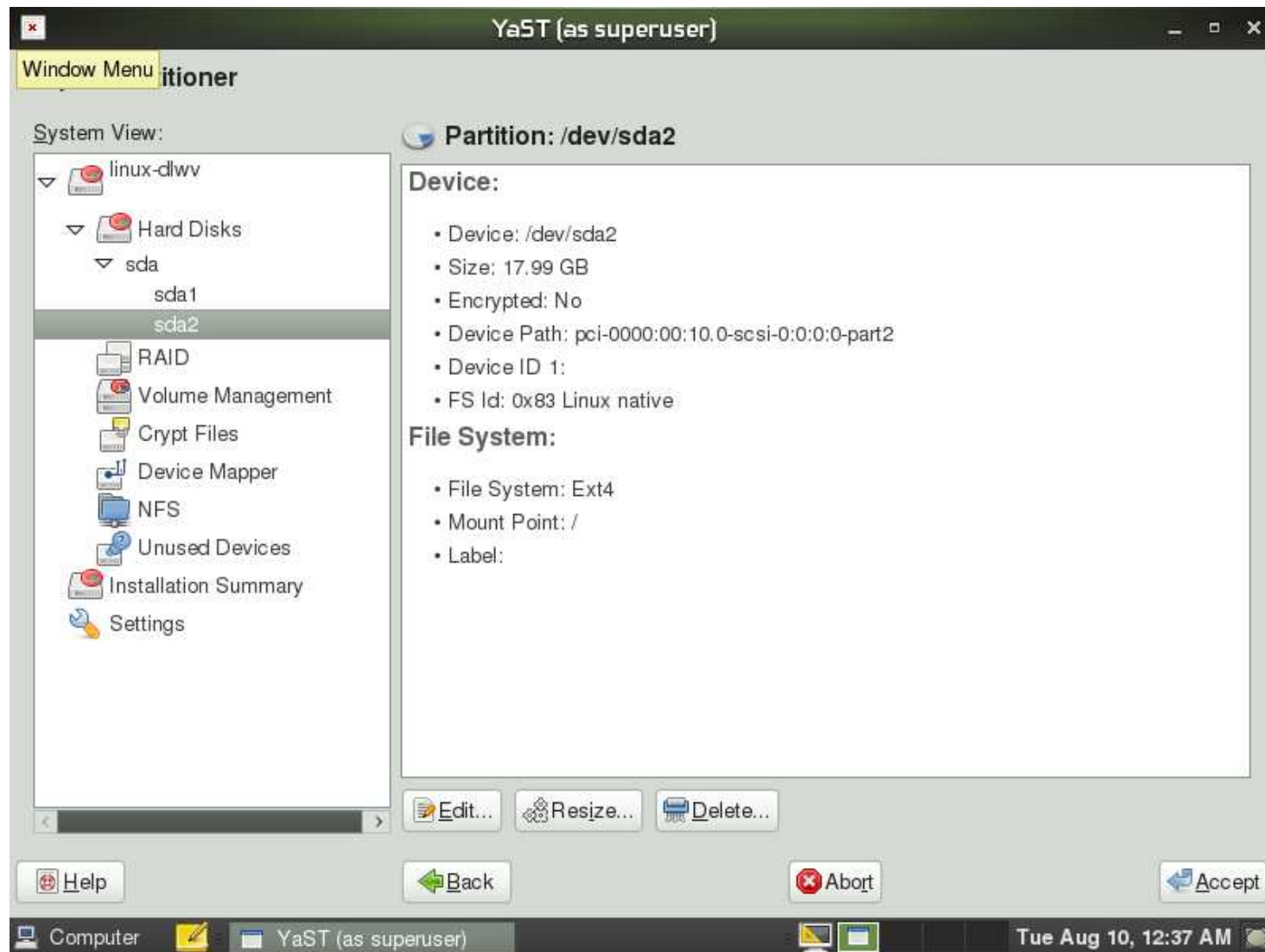
Please note that there is an important step during installation the filesystem of the root partition has to be ext3 (tested to work) or anything else, but not ext4 - there is a bug that we are tracking down when ext4 is used. Also be careful not to wipe out some important partition ;)



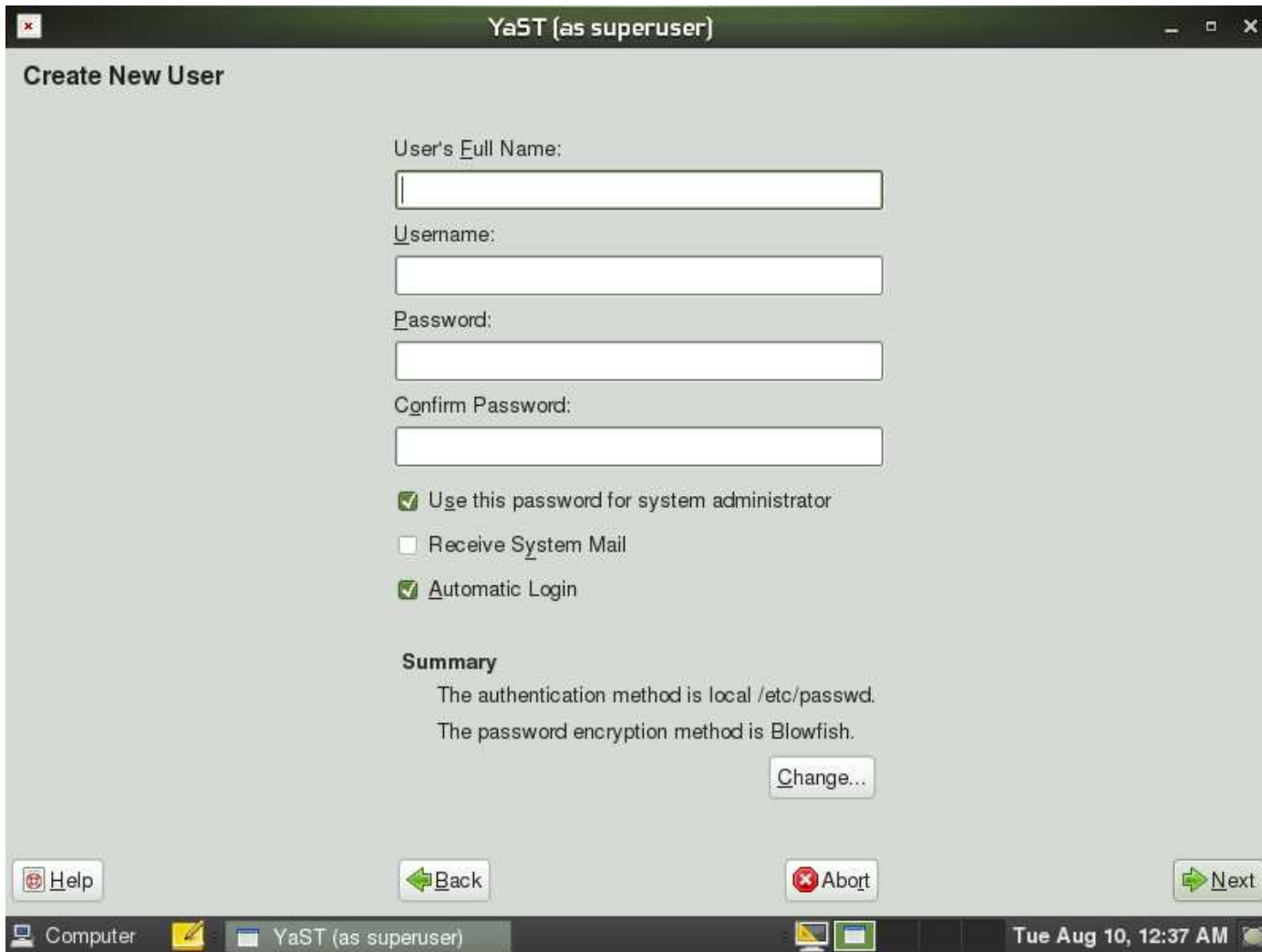
Agree to the License and Click Next.



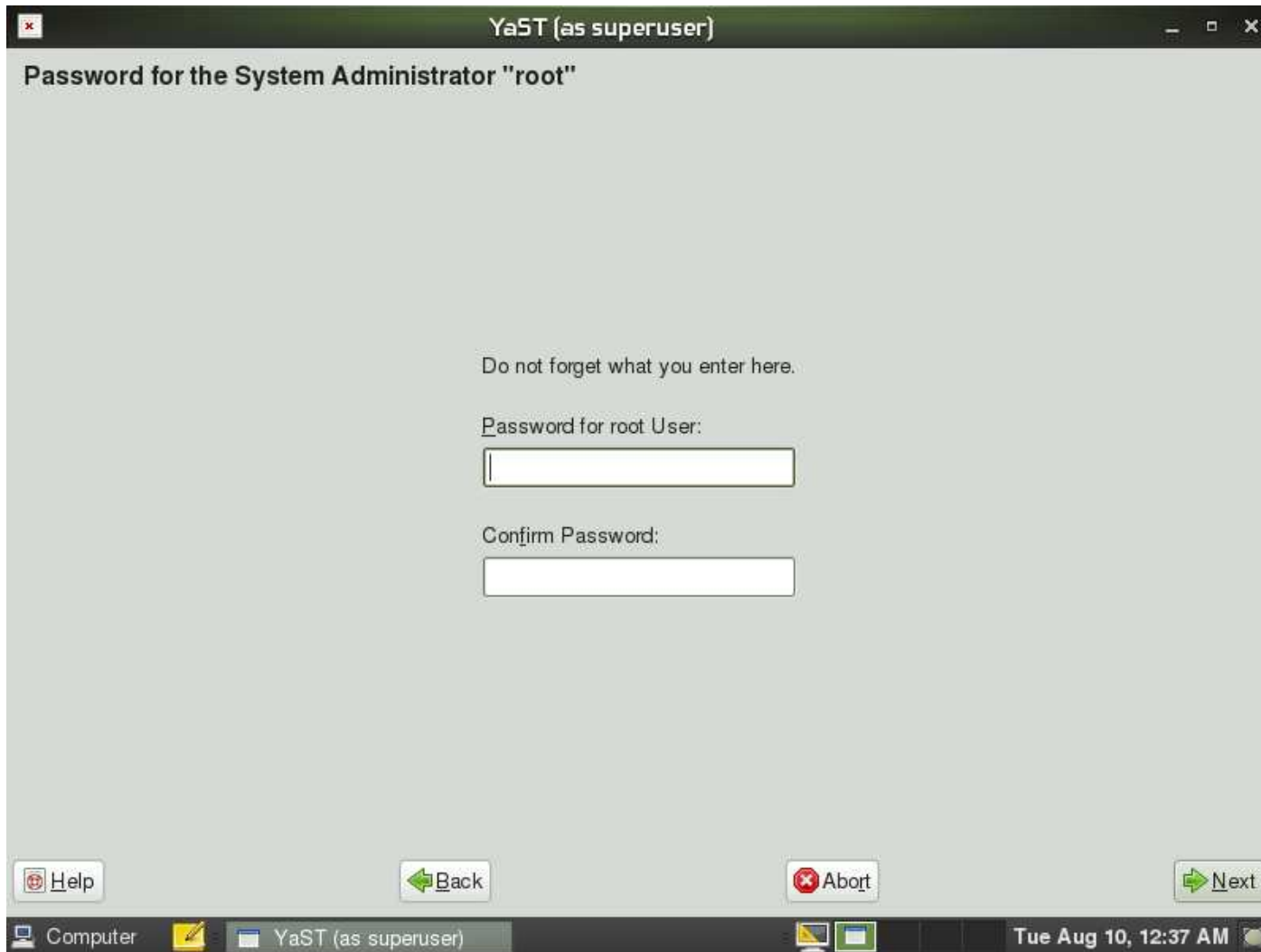
IMPORTANT: Change your root partition to be ext3 filesystem. Click on Edit Partition Setup ... Also be sure that the selected partition is really free from any important data.



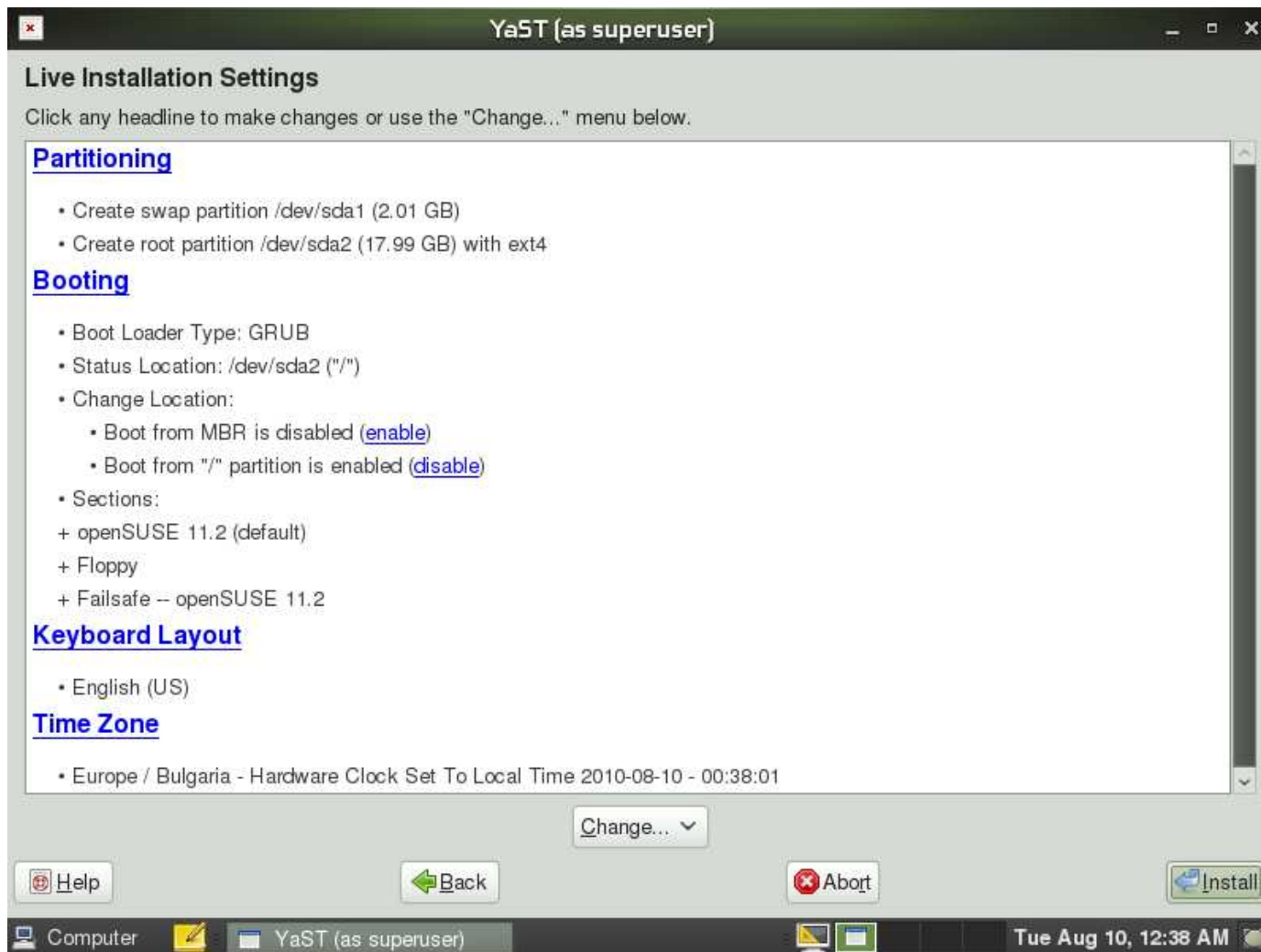
Click on Edit button and change the filesystem to Ext3



Create a user.



Set root password.



After the installation is finished you will boot into your newly installed system for additional post-install configuration