

It was time for a change and we at NetSecL realized that, the new version of NetSecL 3.0 is a live DVD + installation based on OpenSuse. Once installed you can fully enjoy the features of GrSecurity hardened kernel and penetration tools OR if you like to do some penetration testing you can directly run all tools from the live DVD. NetSecL firewall is included as always and most of the penetration tools are ported to the new platform. Also we'd like to mention that we've got many other programs up and running with GrSecurity enabled, which is great success especially when it comes to programs like wine, OpenOffice, Vuze, Qemu and many gnome applications. The password for both admin and root user on the DVD is linux.

Warning: when you install use ext3 (tested) for root partition.

Minimal System Requirements for running the live DVD: 512 MB of RAM

Minimal System Requirements for installing: 1 GB of RAM, 5 GB partition at least (SATA - tested)

With that said we think that the new version of NetSecL is fully function as a Desktop, Server and Penetration testing environment. No Warranty - use it on your own responsibility. Enjoy.

Graphics

 **GIMP**
Image Editor

 **Inkscape**
SVG Vector Illustrator

 **OpenOffice.org Draw**
Drawing

 **sK1**
Scalable Graphics

 **XSane**
Scanning

 **Brasero**
Disc Burner

 **CD Player**

 **DVD Styler**

 **dvdrip**
dvd:rip

 **FlashPlayer**
Flash Standalone Player

 **ISO Master**
ISO File Editor

 **MPlayer Media Player**
Multimedia player

 **Rhythmbox**
Music Player

 **Sound**

 **Sound Recorder**
Record sound clips

 **xine**

Internet



Chromium
Web Browser



FileZilla
FTP and SFTP client



Firefox
Web Browser



KPPP
Internet Dial-Up Tool



Vuze



Wireshark
Network Analyzer



Zenmap
Port Scanner



Zenmap (as root)
Port Scanner

Office



Dia
Diagram Editor



Inkscape
SVG Vector Illustrator



OpenOffice.org Base
Database



OpenOffice.org Calc
Spreadsheet



OpenOffice.org Impress
Presentation



OpenOffice.org Writer
Word Processor

System



About GNOME

[Learn more about GNOME](#)



AQEMU



CD/DVD Creator



Computer



EtherApe



File Browser



File Management



Firewall Builder



FTP Administration



GNOME Terminal

[Command Line Terminal](#)



File Browser

nVidia Settings

nVidia Configuration



OpenJDK Policy Tool



SaX2

Configure X11 System



Search for Files...

Nautilus Search Tool



Sound



Wireshark

Network Analyzer



XTerm



YaST

Administrator Settings



Zenmap

Port Scanner



Zenmap (as root)

Port Scanner

 **GNOME Terminal**
Command Line Terminal

 **Home Folder**
File Browser

 **Htop**
Process Viewer

 **Install Software**


 **Midnight Commander**

 **Network**
File Browser

nVidia Settings
nVidia Configuration

 **OpenJDK Policy Tool**

 **SaX2**
Configure X11 System

 **Search for Files...**
Nautilus Search Tool

 **Sound**

Utilities


 **gedit**
Text Editor


 **Genius Math Tool**

 **GNOME Character Map**
Character Map

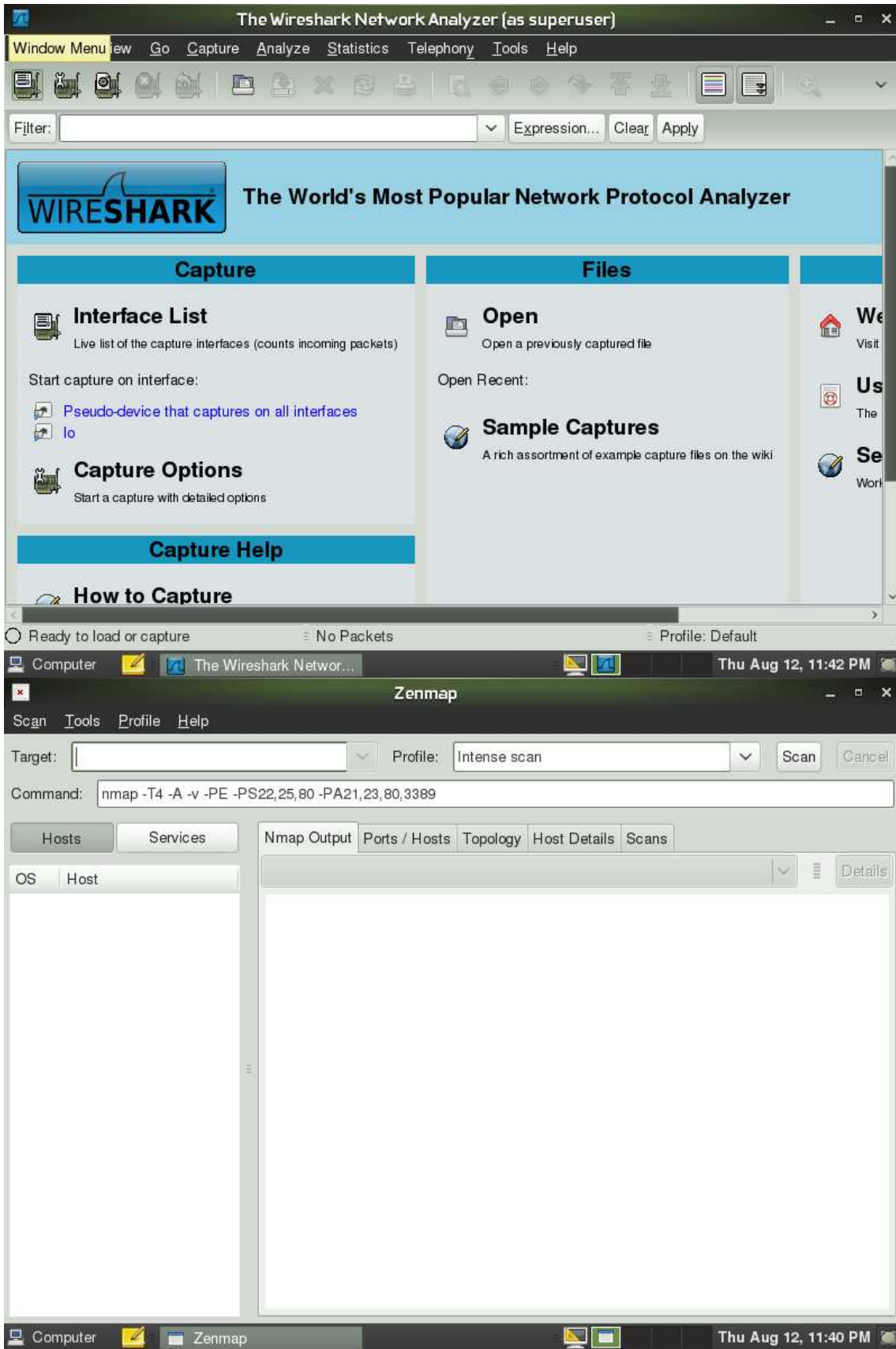
 **KlamAV**
Anti-Virus Manager

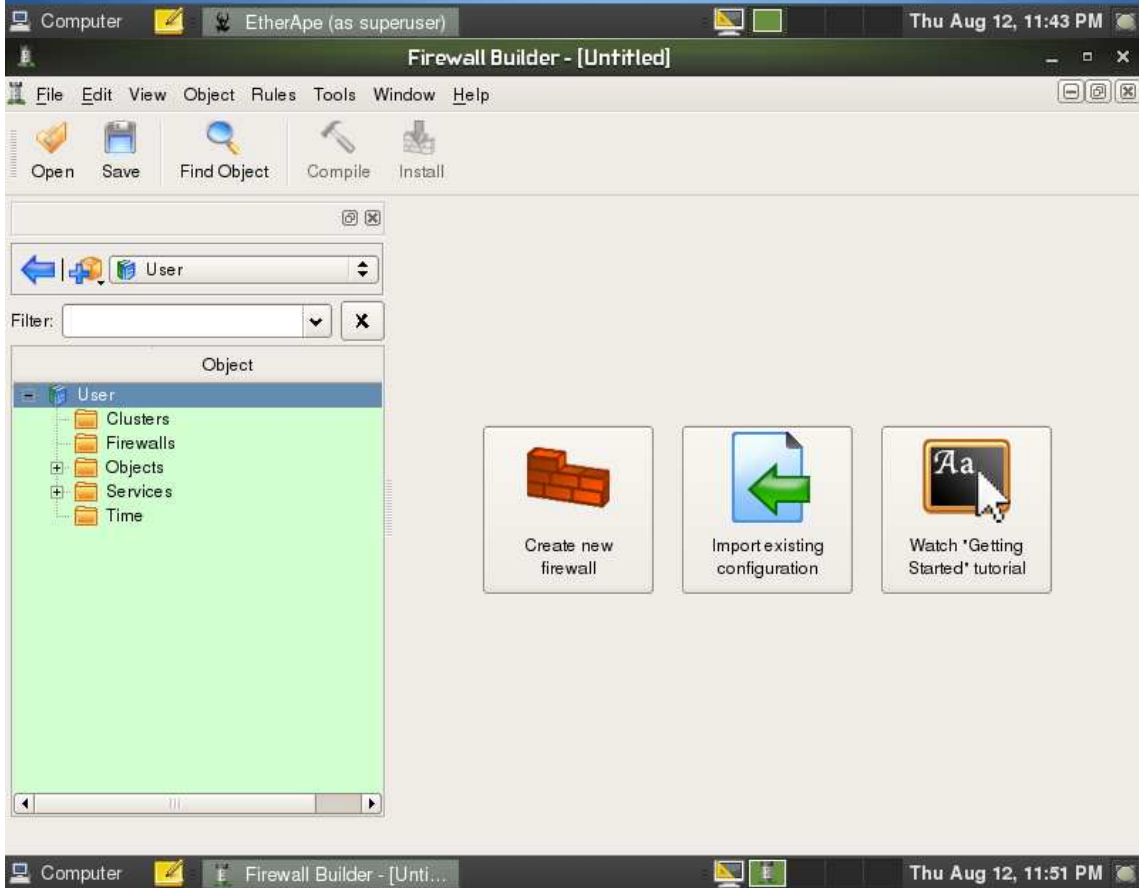
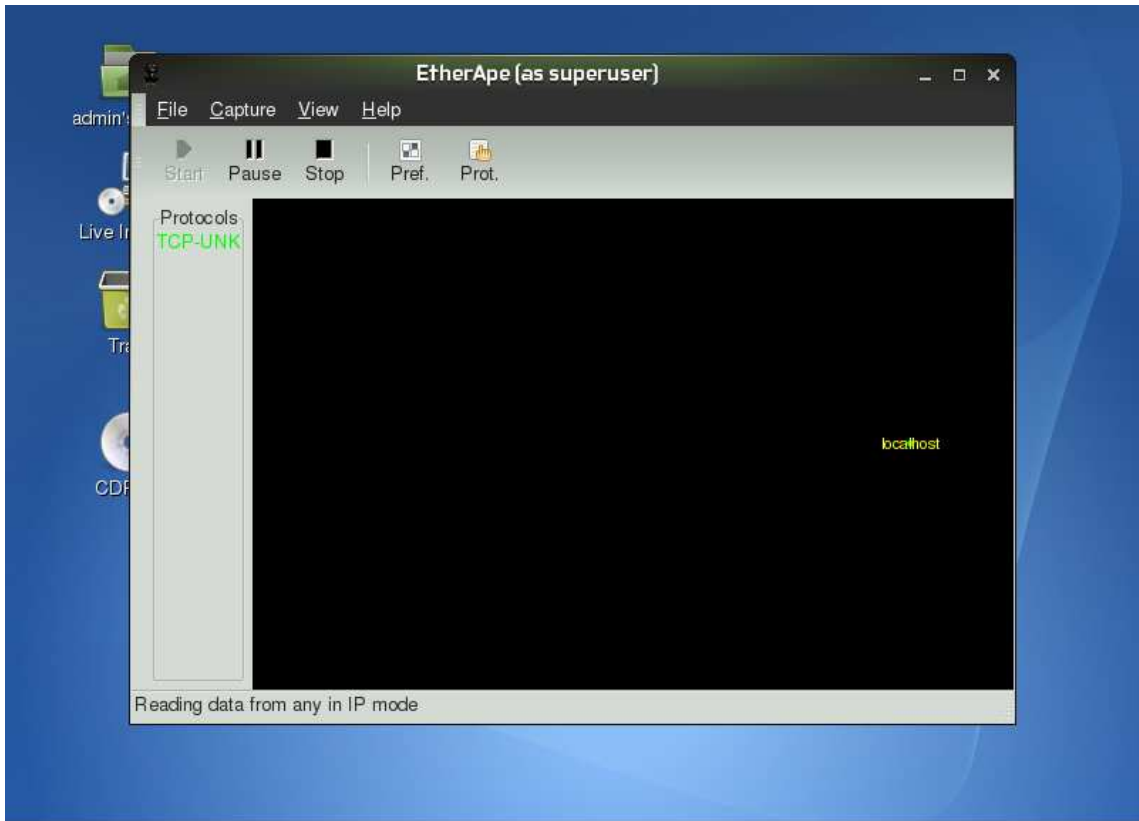
 **OpenVAS-Client**

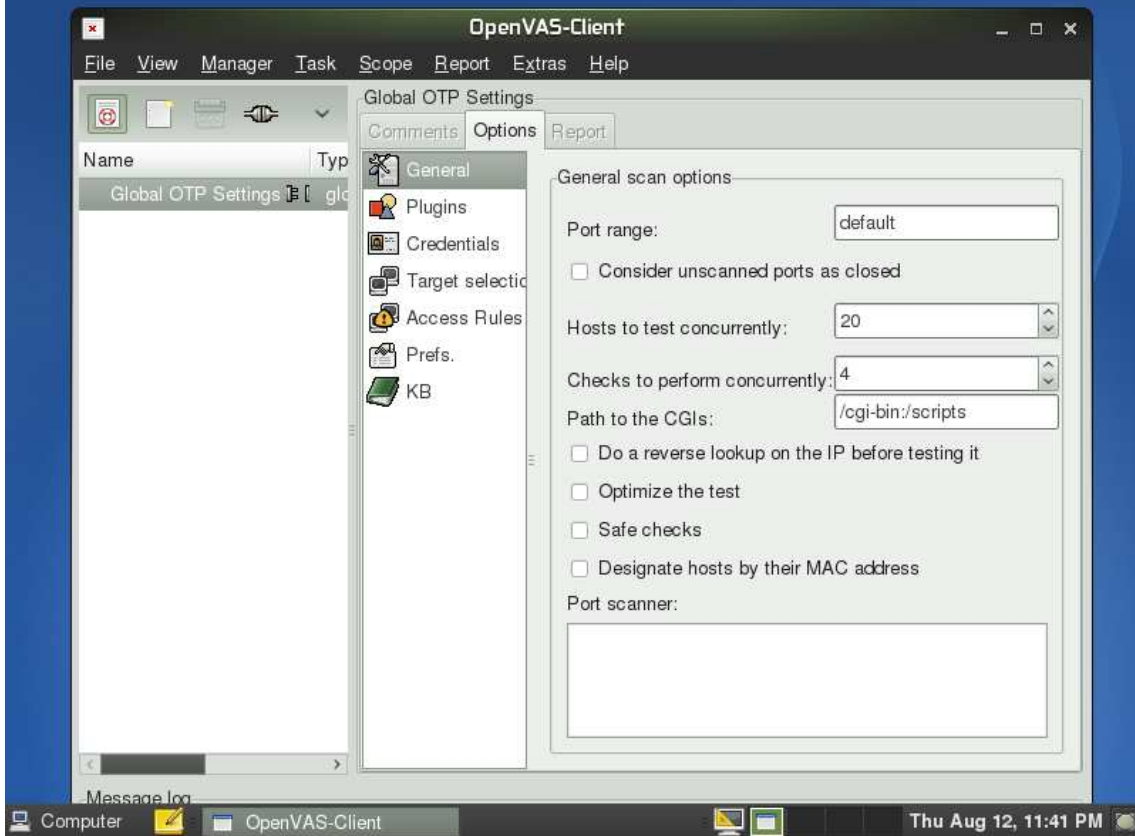
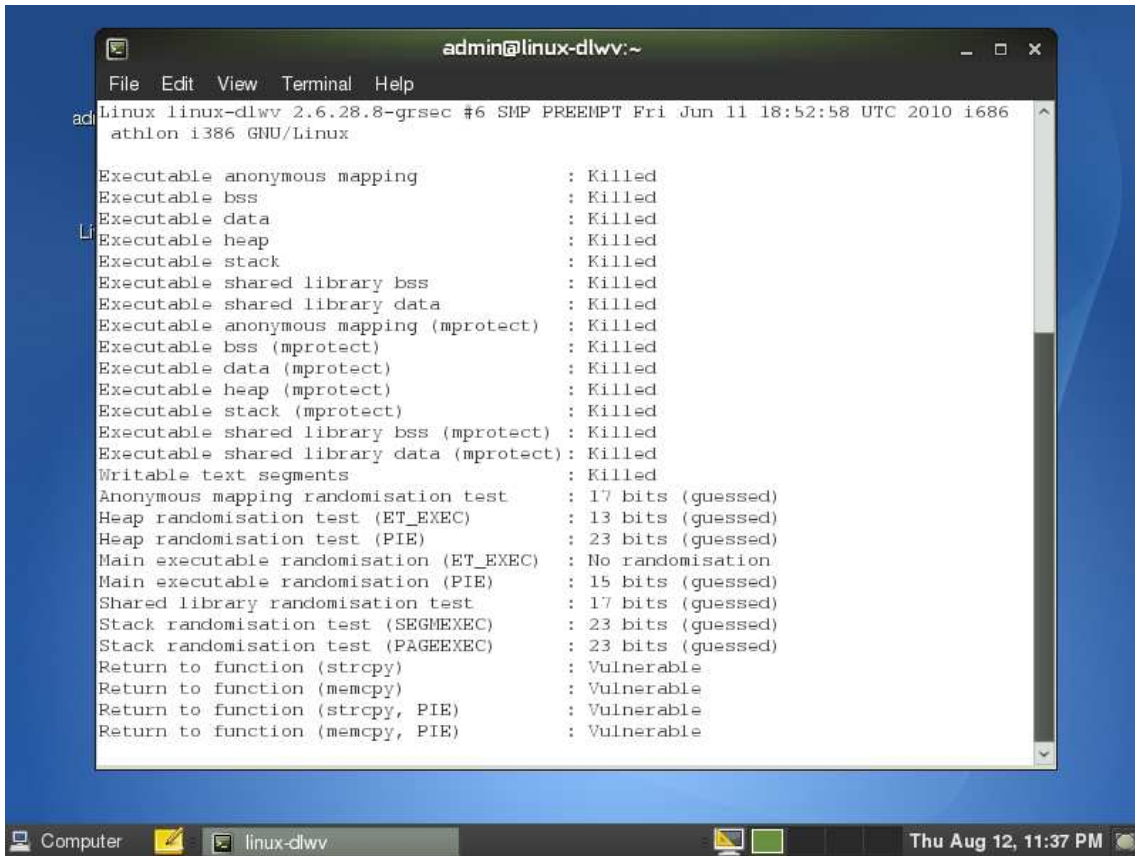
 **Qt 4 Settings**

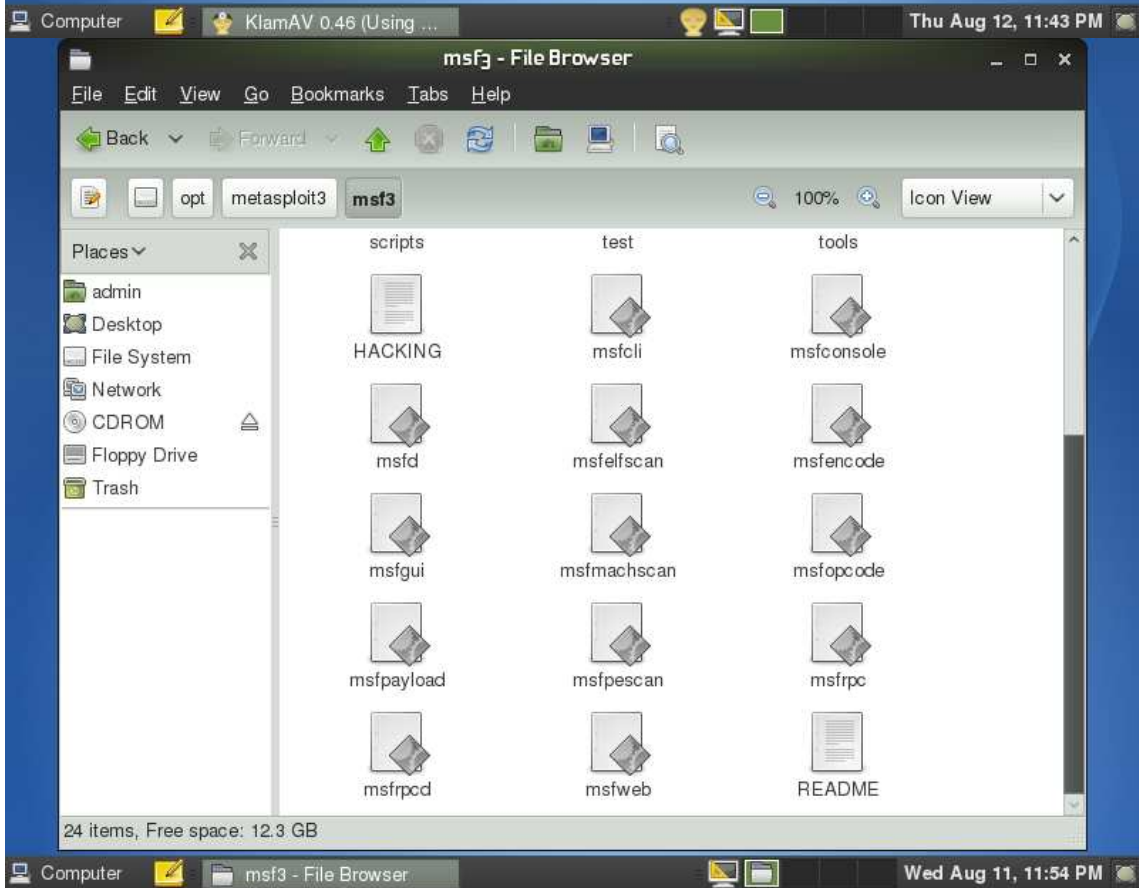
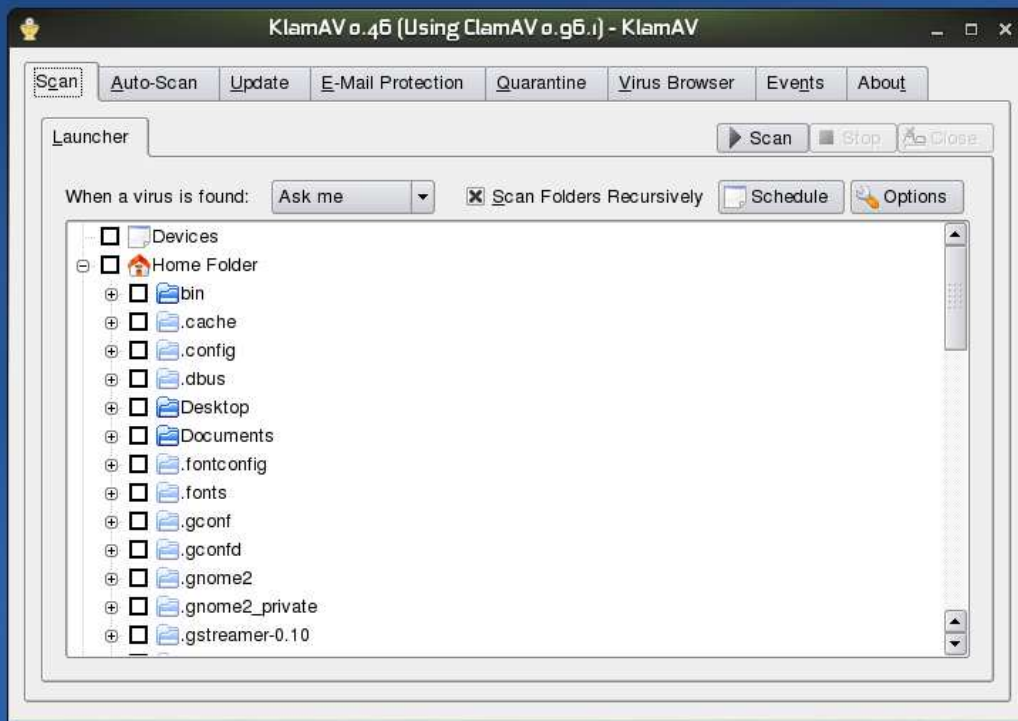
 **Tomboy Notes**
Note-taker

 **Xarchiver**
Archiva manager









Metasploit Framework Web Console 3.4.0-release - Mozilla Firefox

File Edit View History Bookmarks Tools Help

http://127.0.0.1:55555/

Go back one page openSUSE Getting Started Latest Headlines Mozilla Firefox

Metasploit Framework Web Consol...

Mozilla Firefox is free and open source software from the non-profit Mozilla Foundation. Know your rights...

Exploits Auxiliaries Payloads Console Sessions Options About

metasploit

```
admin@linux-dlwg:~  
File Edit View Terminal Help  
linux-dlwg:/opt/metasploit3/msf3 # ./msfweb  
*****  
**** This version of the Ruby interpreter contains a serious bug  
**** related to short-named constants, we strongly recommend that you ****
```

Done

Computer admin@linux-dlwg:~ Metasploit Framework... Thu Aug 12, 11:50 PM

penetration - File Browser

File Edit View Go Bookmarks Tabs Help

Back Forward Home Refresh Stop Search

usr penetration exploitdb 100% Icon View

Places

- admin
- Desktop
- File System
- Network
- CDROM
- Floppy Drive
- Trash

AIX	bruteforce	BSD
chat	CISCO	decypher
exploitdb	Firewalls	HPUX
icmp	Info&Scan	inguma
IRIX	isr-evilgrade	Linux

26 items, Free space: 12.3 GB

Computer penetration - File Brow... Wed Aug 11, 11:55 PM

